

A decorative graphic on the left side of the slide consists of three colored lines: a yellow-green line starting from the top left, an orange line starting from the middle left, and a blue line starting from the bottom left. Each line has a circular dot at its end, and they all curve towards the right, framing the text.

# ROADMAP FOR SUSTAINABLE HEALTHCARE

SESSION 2 – “CHALLENGE ACCEPTED”:  
INSPIRATIONAL TRANSFORMATIONS OF  
HEALTHCARE SYSTEMS IN EUROPE

“BREAKING THE SILOS: TECHNOLOGY AT THE  
SERVICE OF HEALTH”

WALTER J.P. VAN KUIJEN

MSC, MBA, SENIOR VICE PRESIDENT, GLOBAL  
GOVERNMENT & PUBLIC AFFAIRS, PHILIPS

# A Vision of the Future and Solutions for Today

Healthy Living Prevention Diagnosis Treatment Recovery Home Care

**Walter van Kuijen**  
**SVP Global Government & Public Affairs**

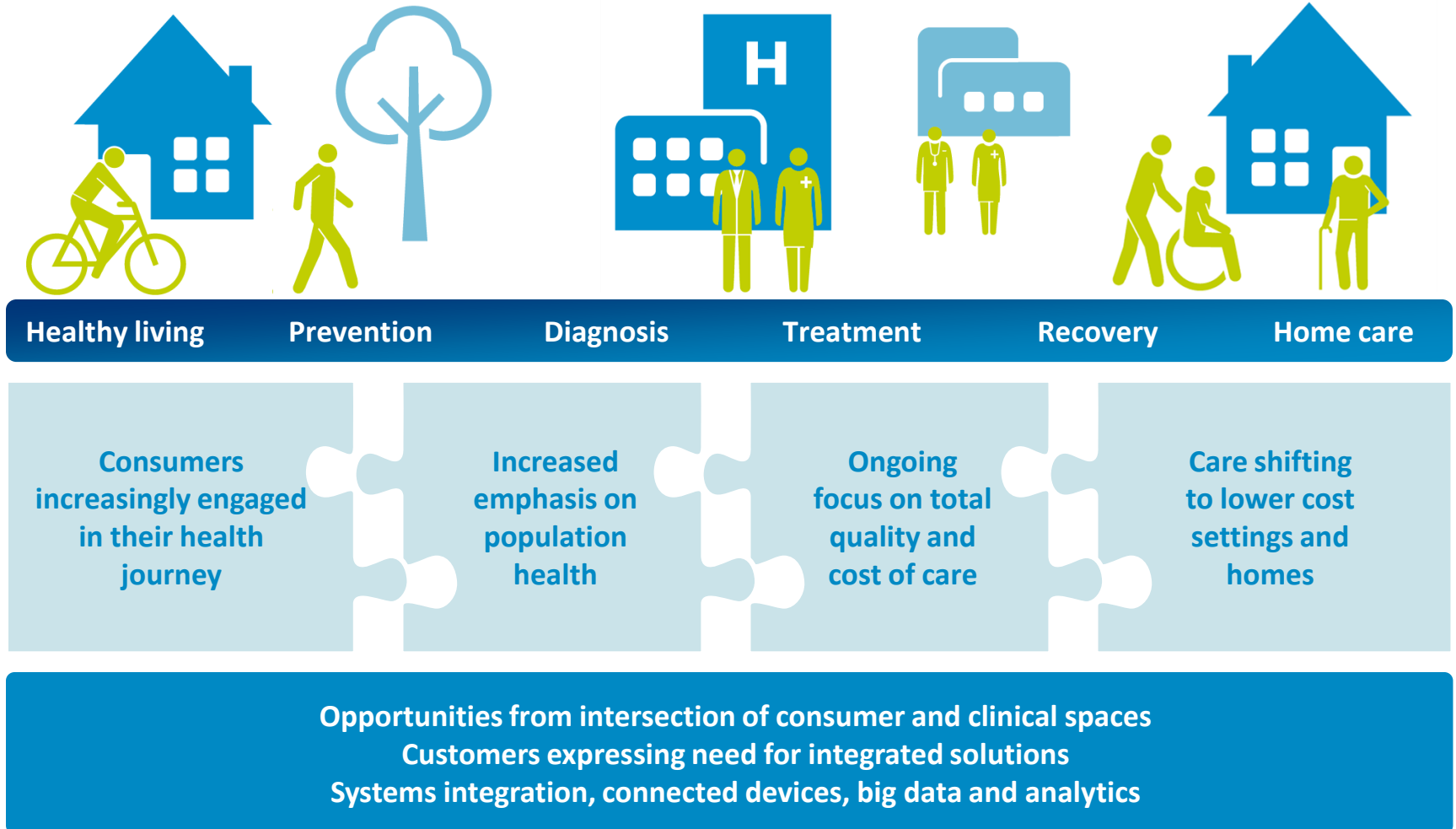
19 March 2015

# The changing global healthcare landscape requires a fundamentally different informatics approach

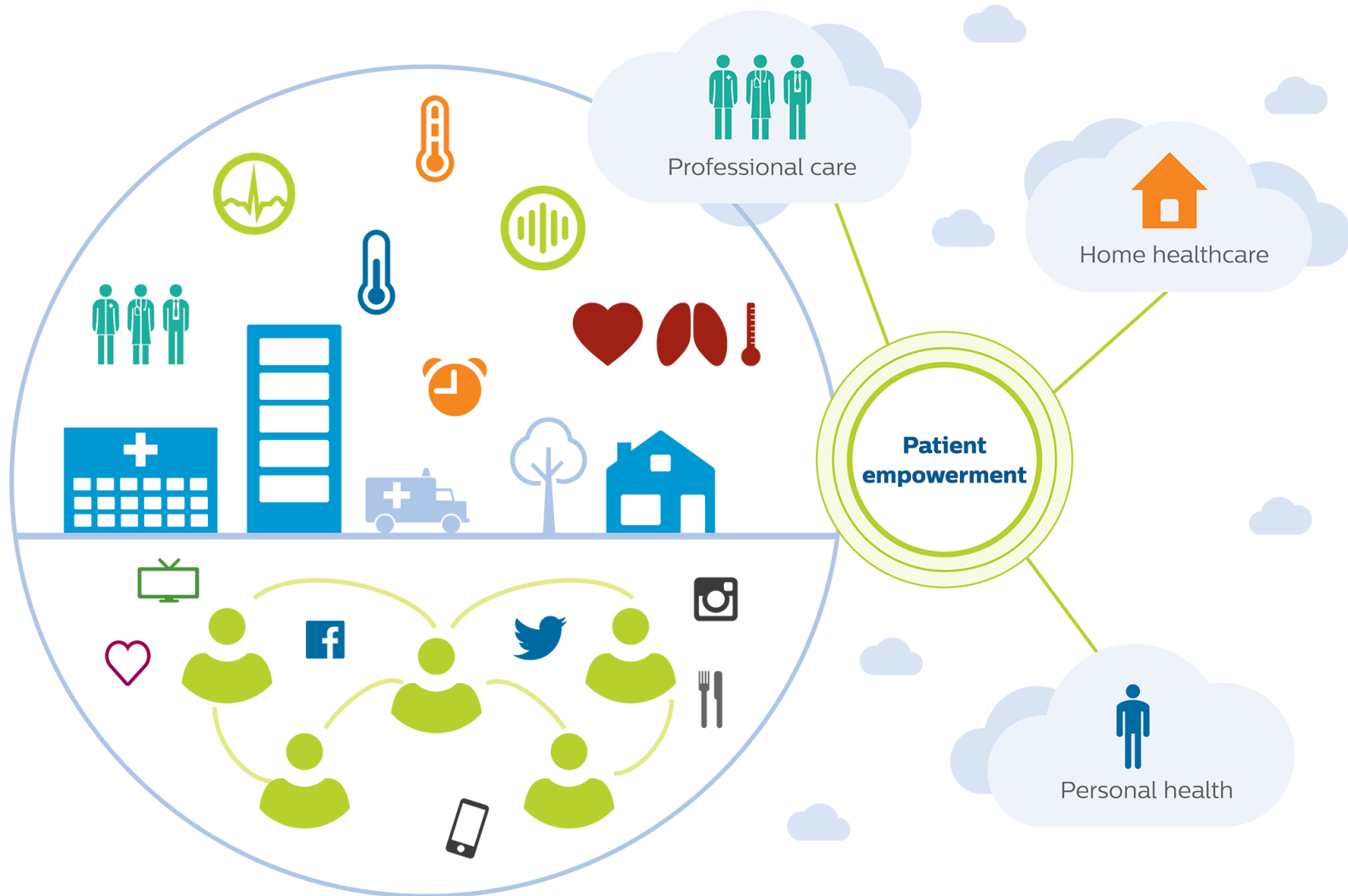


- Enabling **population health management, including Healthy Living and Prevention**
- **Patient centric solutions**, with built in **collaboration** models across the health continuum
- **Integrating data from disparate point solutions** across hospitals, physician practices, insurance, consumer homes
- Provide **actionable and context sensitive information** to clinicians, patients and care givers

# Convergence between Healthcare and Consumer markets



# The digital revolution in healthcare





# Care coordination and remote patient monitoring for improved outcomes

## Tele-health applications on Philips HealthSuite Digital Platform...

### eCareCoordinator for clinicians

- Population health management and care coordination
- Remotely monitor patients' vital signs and health status
- Monitors hundreds of patients simultaneously and prioritizes need of care through data analytics



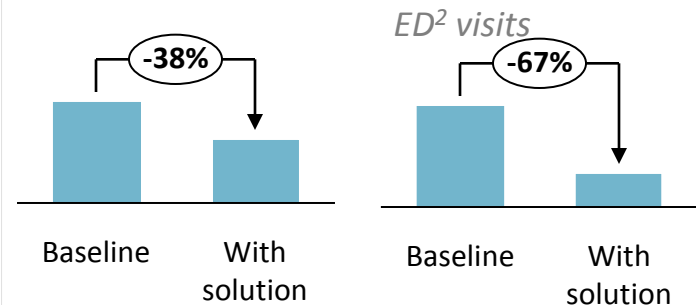
### eCareCompanion for patients

- Enables real-time communication with care team
- Health coach to patients with chronic conditions like heart disease, diabetes, COPD, cancer



...enabling programs to achieve relevant financial and clinical improvements<sup>1</sup>

### Hospital visits



Less days in a hospital  
**10.2/patient/year**



Total cost reduction  
**\$27k/patient/year**

<sup>1</sup>Source: LeadingAge CAST Report, Provider Case Studies 2013

<sup>2</sup>Emergency Department



Thank you