



ROADMAP FOR SUSTAINABLE HEALTHCARE



LIVE TWEET DURING THE
CONFERENCE AT
[#R4SHC](#)

A decorative graphic consisting of three colored lines (yellow-green, orange, and blue) that start from the left edge and curve upwards and then rightwards, ending in solid circles of the same color. The yellow-green line is the highest, the orange line is in the middle, and the blue line is the lowest.

ROADMAP FOR SUSTAINABLE HEALTHCARE

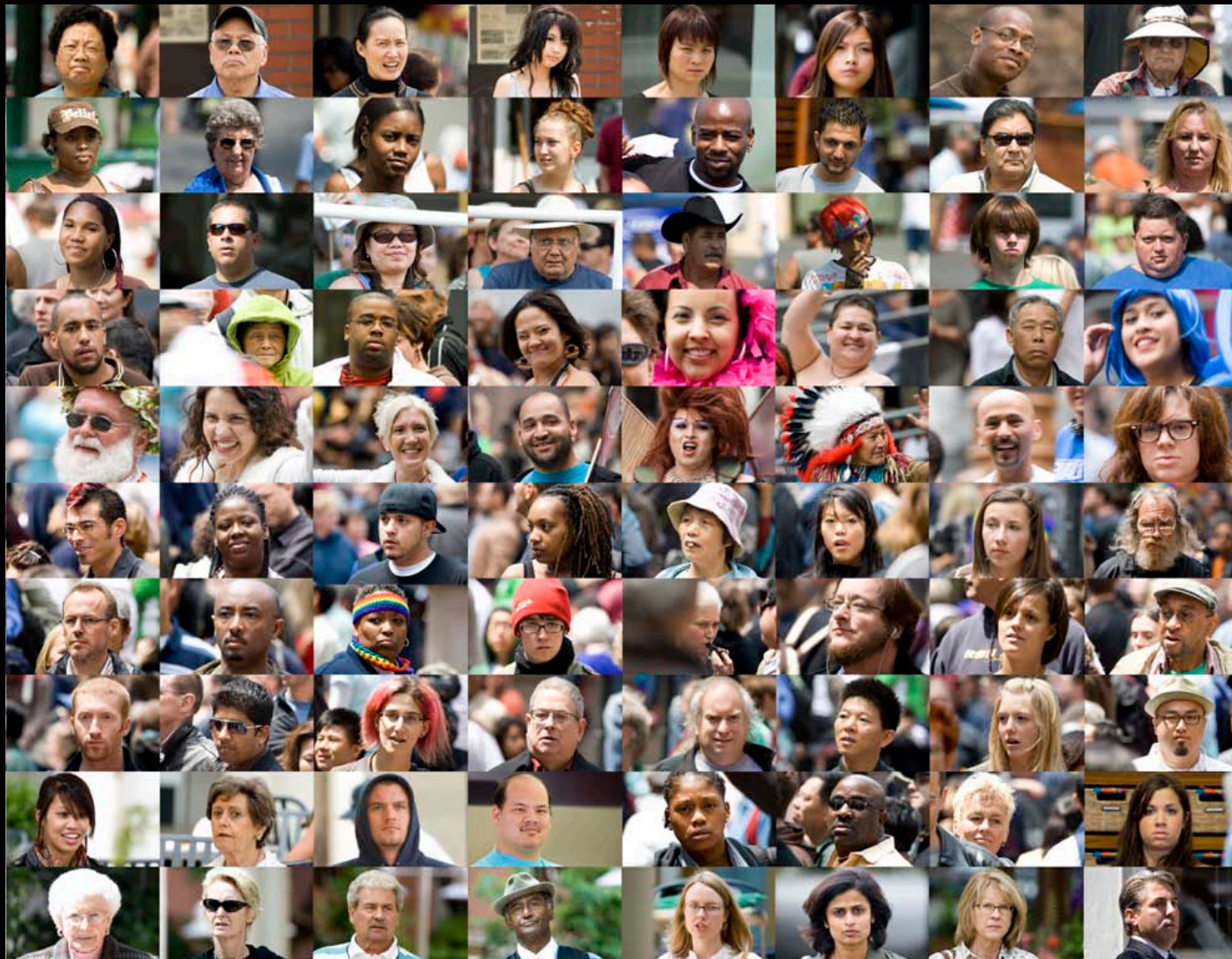
INTRODUCING TODAY'S CONFERENCE

SARAH JARVIS
GENERAL PRACTITIONER,
MEDICAL WRITER & BROADCASTER

A CROSSROADS



WE ARE ALL PATIENTS



18

PRACTICAL RECOMMENDATIONS

THANKS TO



abbvie

PHILIPS



BACK IN 2013



RECIPES FOR SUSTAINABLE HEALTHCARE



3 KEY DIRECTIONS

1: Investing in prevention and early intervention

2: Fostering empowered and responsible citizens

3: Reorganising care delivery



ROADMAP FOR SUSTAINABLE HEALTHCARE



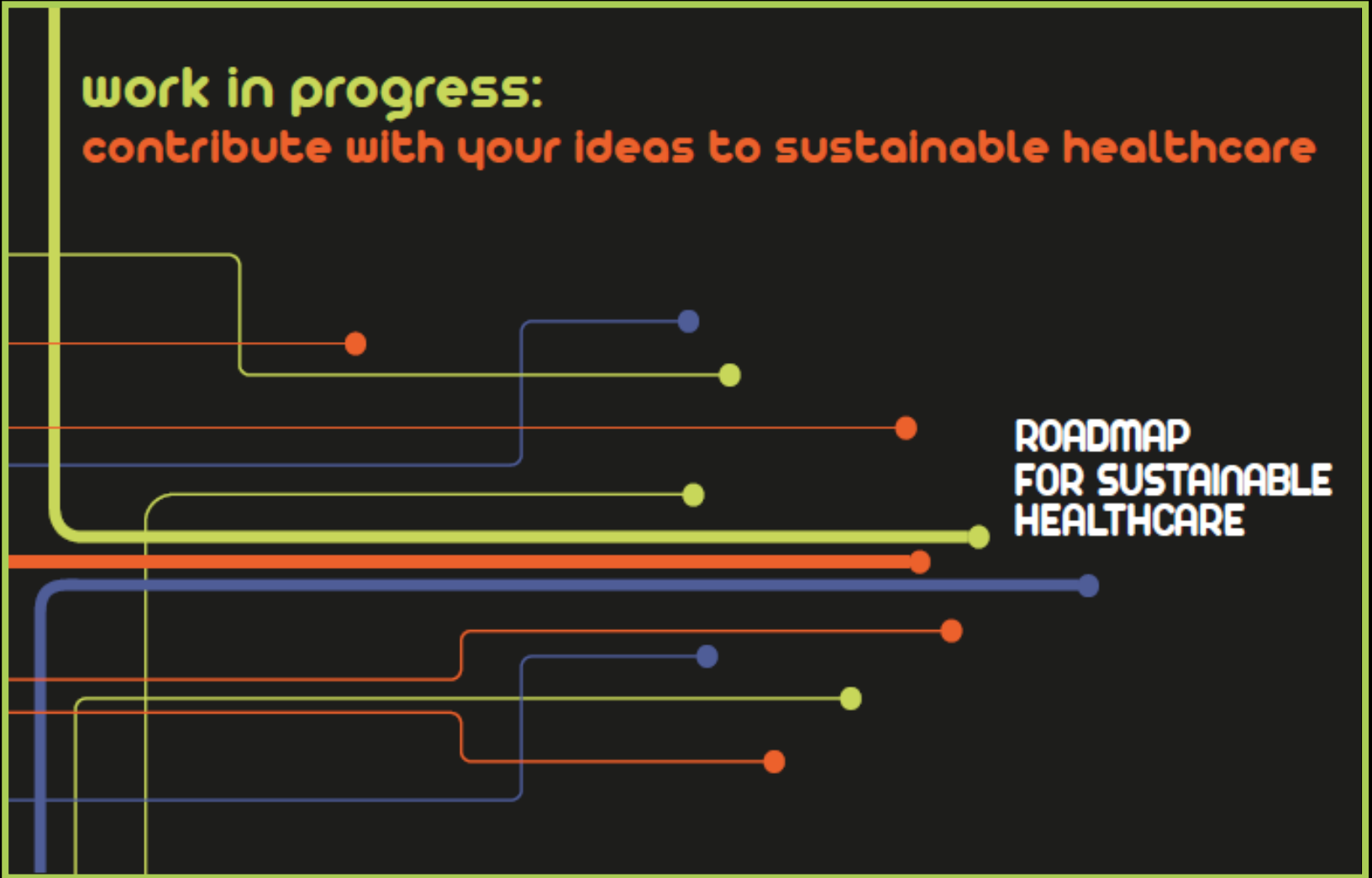
LIVE TWEET DURING THE
CONFERENCE AT
#R4SHC

POST IT BOARD: SHARE YOUR IDEAS!

work in progress:
contribute with your ideas to sustainable healthcare

**ROADMAP
FOR SUSTAINABLE
HEALTHCARE**

**ROADMAP
FOR SUSTAINABLE
HEALTHCARE**



THE EUROPEAN STEERING GROUP ON SUSTAINABLE HEALTHCARE



Mary Harney

Chair of the ESG
Former Health Minister of Ireland



Prof. Walter Ricciardi

Rapporteur of the European White Paper
European Public Health Association
Catholic University of Sacred Heart, Rome



Prof. Vincenzo Atella

Centre for Economic and International
University of Rome



Dr. Mary Baker

European Brain Council, UK



Dr. Jacek Grabowski

Medical University of Lodz, Poland



Dr. Juan Jover

Hospital Clinico San Carlos,
Complutense University, Madrid



Dr. Pascale Richetta

AbbVie



Walter van Kuijen

Philips



ROADMAP FOR SUSTAINABLE HEALTHCARE



LIVE TWEET DURING THE
CONFERENCE AT
#R4SHC